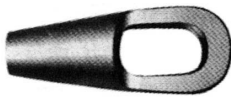


# ワイヤソケット・両爪フック

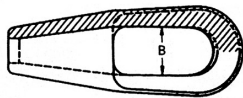
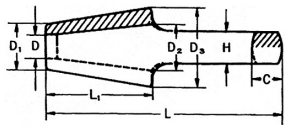
## クローズド形 (C形)

単位=mm

●略称 JISソケットC

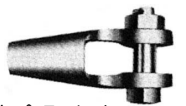


- 材質S25C材鍛造製
- 特殊寸法設計致します。ご照会ください
- 生地・溶融亜鉛メッキ (ドブメッキ)
- USA形はご照会ください
- 53~63mmは受注生産



| 呼び  | ワイヤの径 | 使用荷重 | D  | D1  | D2  | D3  | B   | L   | L1  | H  | C  | 計算質量  |
|-----|-------|------|----|-----|-----|-----|-----|-----|-----|----|----|-------|
| 16  | 16    | 2.6t | 20 | 26  | 37  | 55  | 40  | 193 | 88  | 24 | 21 | 1.6kg |
| 18  | 18    | 3.3  | 23 | 30  | 40  | 62  | 43  | 210 | 95  | 27 | 24 | 2.0   |
| 20  | 20    | 4.1  | 25 | 35  | 44  | 69  | 47  | 227 | 103 | 30 | 26 | 2.4   |
| 22  | 22.4  | 5.1  | 30 | 40  | 49  | 77  | 52  | 245 | 111 | 33 | 29 | 3.4   |
| 24  | 24    | 5.9  | 32 | 44  | 52  | 84  | 56  | 262 | 119 | 36 | 31 | 4.4   |
| 25  | 25    | 6.9  | 33 | 49  | 56  | 91  | 60  | 281 | 127 | 39 | 34 | 5.4   |
| 28  | 28    | 8.0  | 36 | 53  | 61  | 98  | 65  | 298 | 135 | 41 | 36 | 6.4   |
| 30  | 30    | 9.2  | 38 | 58  | 64  | 106 | 68  | 316 | 143 | 44 | 39 | 7.8   |
| 32  | 31.5  | 10.5 | 40 | 62  | 68  | 113 | 72  | 335 | 151 | 47 | 42 | 9.8   |
| 34  | 33.5  | 11.5 | 42 | 67  | 71  | 120 | 75  | 353 | 159 | 50 | 44 | 11.0  |
| 36  | 35.5  | 13.0 | 44 | 71  | 76  | 127 | 80  | 373 | 168 | 53 | 47 | 13.0  |
| 38  | 37.5  | 14.5 | 47 | 76  | 80  | 134 | 84  | 392 | 177 | 56 | 49 | 15.0  |
| 40  | 40    | 16.5 | 49 | 80  | 84  | 141 | 88  | 413 | 186 | 59 | 52 | 18.5  |
| 42  | 42.5  | 18.5 | 52 | 84  | 88  | 148 | 92  | 434 | 196 | 61 | 54 | 20.6  |
| 45  | 45    | 21.0 | 54 | 92  | 96  | 162 | 101 | 474 | 214 | 67 | 60 | 25.0  |
| 48  | 47.5  | 23.0 | 57 | 96  | 99  | 169 | 104 | 494 | 223 | 70 | 62 | 32.0  |
| 50  | 50    | 25.5 | 60 | 99  | 104 | 176 | 109 | 516 | 233 | 73 | 65 | 35.0  |
| ■53 | 53    | 28.0 | 63 | 102 | 108 | 183 | 113 | 536 | 242 | 76 | 67 | 38.0  |
| ■56 | 56    | 31.5 | 66 | 108 | 114 | 193 | 119 | 567 | 256 | 80 | 71 | 45.2  |
| ■60 | 60    | 36   | 70 | 116 | 124 | 210 | 129 | 619 | 279 | 87 | 78 | 58.3  |
| ■63 | 63    | 40   | 74 | 120 | 128 | 216 | 133 | 641 | 289 | 90 | 81 | 64.0  |

## オープン形 (O形)

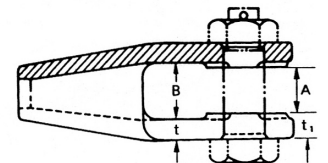
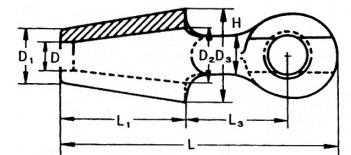


単位=mm

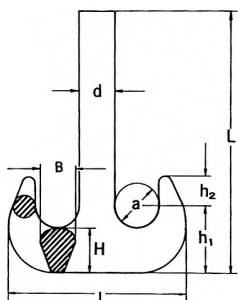
●略称 JISソケットO

- 計算質量はボルトナットを含みます
- 材質S25C材鍛造製
- 特殊寸法設計致します。ご照会ください
- 生地・溶融亜鉛メッキ (ドブメッキ)
- USA形はご照会ください
- 53~63mmは受注生産です

| 呼び  | ワイヤの径 | 使用荷重 | D  | D1  | D2  | D3  | B   | L   | L1  | L3  | H  | t  | t1 | A   | 計算質量  |
|-----|-------|------|----|-----|-----|-----|-----|-----|-----|-----|----|----|----|-----|-------|
| 16  | 16    | 2.6t | 20 | 26  | 37  | 55  | 40  | 193 | 88  | 74  | 24 | 9  | 13 | 32  | 1.7kg |
| 18  | 18    | 3.3  | 23 | 30  | 40  | 62  | 43  | 210 | 95  | 81  | 27 | 11 | 15 | 35  | 2.4   |
| 20  | 20    | 4.1  | 25 | 35  | 44  | 69  | 47  | 227 | 103 | 86  | 30 | 13 | 18 | 37  | 3.4   |
| 22  | 22.4  | 5.1  | 30 | 40  | 49  | 77  | 52  | 245 | 111 | 93  | 33 | 14 | 20 | 40  | 5.0   |
| 24  | 24    | 5.9  | 32 | 44  | 52  | 84  | 56  | 262 | 119 | 98  | 36 | 16 | 22 | 44  | 6.0   |
| 25  | 25    | 6.9  | 33 | 49  | 56  | 91  | 60  | 281 | 127 | 106 | 39 | 18 | 24 | 48  | 7.8   |
| 28  | 28    | 8.0  | 36 | 53  | 61  | 98  | 65  | 298 | 135 | 111 | 41 | 19 | 26 | 51  | 9.0   |
| 30  | 30    | 9.2  | 38 | 58  | 64  | 106 | 68  | 316 | 143 | 118 | 44 | 21 | 28 | 54  | 10.8  |
| 32  | 31.5  | 10.5 | 40 | 62  | 68  | 113 | 72  | 335 | 151 | 125 | 47 | 23 | 31 | 56  | 14.2  |
| 34  | 33.5  | 11.5 | 42 | 67  | 71  | 120 | 75  | 353 | 159 | 131 | 50 | 25 | 33 | 59  | 17.8  |
| 36  | 35.5  | 13.0 | 44 | 71  | 76  | 127 | 80  | 373 | 168 | 138 | 53 | 26 | 35 | 62  | 19.4  |
| 38  | 37.5  | 14.5 | 47 | 76  | 80  | 134 | 84  | 392 | 177 | 144 | 56 | 27 | 36 | 66  | 22.6  |
| 40  | 40    | 16.5 | 49 | 80  | 84  | 141 | 88  | 413 | 186 | 153 | 59 | 29 | 38 | 70  | 27.0  |
| 42  | 42.5  | 18.5 | 52 | 84  | 88  | 148 | 92  | 434 | 196 | 160 | 61 | 30 | 40 | 72  | 31.5  |
| 45  | 45    | 21.0 | 54 | 92  | 96  | 162 | 101 | 474 | 214 | 175 | 67 | 33 | 44 | 79  | 34.8  |
| 48  | 47.5  | 23.0 | 57 | 96  | 99  | 169 | 104 | 494 | 223 | 183 | 70 | 35 | 46 | 82  | 45.0  |
| 50  | 50    | 25.5 | 60 | 99  | 104 | 176 | 109 | 516 | 233 | 191 | 73 | 36 | 48 | 85  | 50.7  |
| ■53 | 53    | 28.0 | 63 | 102 | 108 | 183 | 113 | 536 | 242 | 199 | 76 | 38 | 50 | 89  | 56.0  |
| ■56 | 56    | 31.5 | 66 | 108 | 114 | 193 | 119 | 567 | 256 | 211 | 80 | 40 | 53 | 93  | 68.0  |
| ■60 | 60    | 36   | 70 | 116 | 124 | 210 | 129 | 619 | 279 | 232 | 87 | 43 | 57 | 101 | 87.0  |
| ■63 | 63    | 40   | 74 | 120 | 128 | 216 | 133 | 641 | 289 | 240 | 90 | 44 | 58 | 105 | 95.0  |



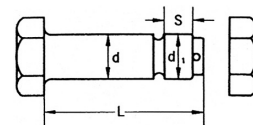
## 両爪フック



| 呼び<br>(使用荷重) | mm  |     |     |     |     |     |      |      |
|--------------|-----|-----|-----|-----|-----|-----|------|------|
|              | a   | B   | d   | H   | h1  | h2  | J    | L    |
| 5.0          | 70  | 48  | 55  | 60  | 95  | 47  | 270  | 460  |
| 7.5          | 80  | 56  | 65  | 70  | 110 | 54  | 310  | 550  |
| 10           | 90  | 64  | 70  | 80  | 125 | 60  | 340  | 590  |
| 15           | 100 | 76  | 80  | 95  | 145 | 67  | 390  | 680  |
| 20           | 115 | 88  | 90  | 110 | 168 | 77  | 450  | 770  |
| 25           | 125 | 96  | 100 | 120 | 183 | 84  | 500  | 850  |
| 30           | 135 | 104 | 110 | 130 | 198 | 90  | 540  | 920  |
| 40           | 150 | 120 | 130 | 150 | 225 | 100 | 610  | 1050 |
| 50           | 165 | 130 | 140 | 165 | 248 | 110 | 670  | 1300 |
| 60           | 180 | 144 | 150 | 180 | 270 | 120 | 730  | 1450 |
| 80           | 200 | 165 | 170 | 206 | 306 | 134 | 820  | 1600 |
| 100          | 225 | 184 | 200 | 230 | 343 | 150 | 930  | 1750 |
| 120          | 245 | 202 | 220 | 252 | 375 | 164 | 1020 | -    |
| 150          | 270 | 224 | 240 | 280 | 415 | 180 | 1110 | -    |
| 200          | 310 | 256 | 270 | 322 | 477 | 207 | 1270 | -    |
| 250          | 340 | 288 | 300 | 360 | 530 | 227 | 1430 | -    |

## JIS形ワイヤソケット (O形)

### 六角ボルトとナット



| 呼び | d  | ねじの呼び d1 | L   | S  |
|----|----|----------|-----|----|
| mm |    |          |     |    |
| 16 | 25 | M-22     | 81  | 13 |
| 18 | 28 | 24       | 89  | 14 |
| 20 | 31 | 27       | 101 | 16 |
| 22 | 34 | M-30     | 110 | 18 |
| 24 | 37 | 33       | 120 | 20 |
| 25 | 40 | 39       | 134 | 23 |
| 28 | 43 | M-42     | 143 | 25 |
| 30 | 46 | 45       | 152 | 27 |
| 32 | 49 | 48       | 162 | 29 |
| 34 | 52 | M-48     | 169 | 29 |
| 36 | 55 | 52       | 178 | 31 |
| 38 | 58 | 56       | 190 | 34 |
| 40 | 61 | M-56     | 198 | 34 |
| 42 | 64 | 60       | 206 | 36 |
| 45 | 70 | 68       | 225 | 40 |
| 48 | 73 | M-68     | 232 | 40 |
| 50 | 76 | 72×6     | 241 | 42 |
| 53 | 79 | 76×6     | 253 | 46 |
| 56 | 83 | M-80×6   | 265 | 48 |
| 60 | 90 | 85×6     | 287 | 50 |
| 63 | 93 | 85×6     | 293 | 50 |